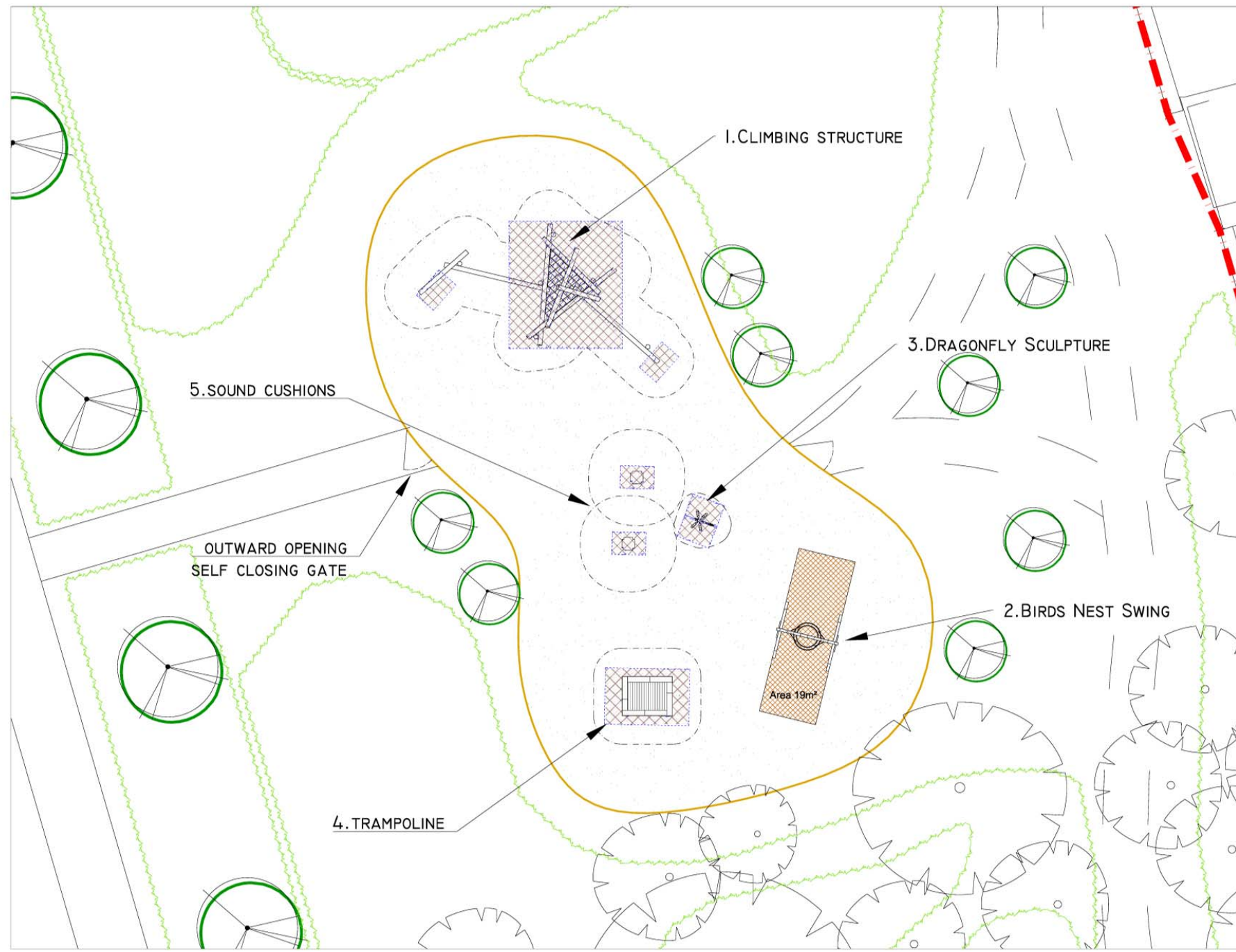
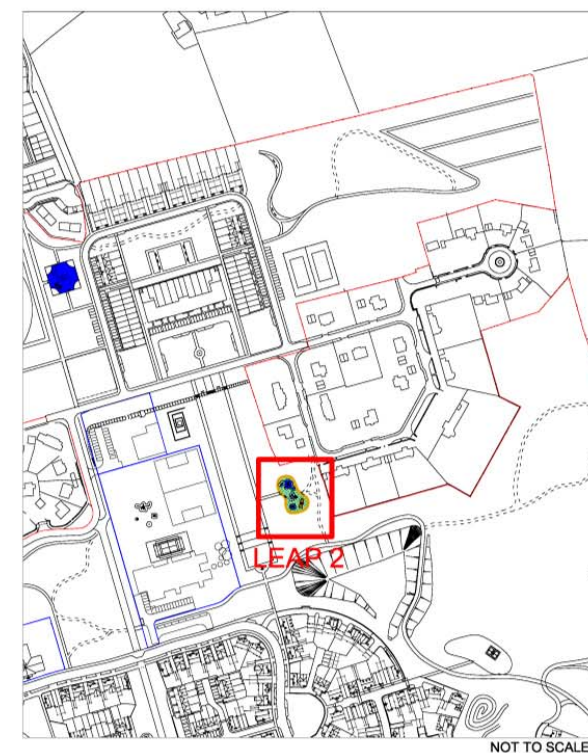
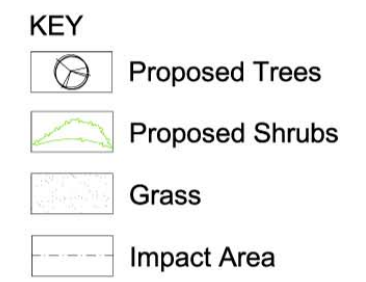
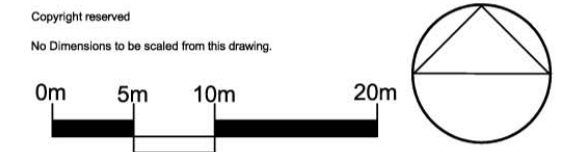


NOTES:  
Based upon the Ordnance Survey map with permission of The Controller of Her Majesty's Stationery Office, © Crown Copyright.  
Aspect Landscape Planning Ltd, West Court, Hardwick Business Park, Noral Way, Banbury OX16 2AF.  
Licence 100045345



PLAY EQUIPMENT

- ①  Supplier: Timberplay  
Product: Climbing structure 09  
Ref: 6.510090
- ②  Supplier: Broxap  
Product: Swing with Birds Nest  
Ref: BX/PD 100004
- ③  Supplier: Broxap  
Product: Dragonfly Sculpture  
Ref: BX/ HMP 350007
- ④  Supplier: Sutcliffe  
Product: Trampolines  
Ref: SMB 230401
- ⑤  Supplier: TimberPlay  
Product: Sound cushions  
Ref: 9.024100

SURFACES

 Supplier: Terram  
Product: Safety rubber matting 1x1.5m  
Thickness: 22mm  
Openings 250mm



REV	DATE	NOTE	Drawn	Chk'd
C	17.12.18	Playbark omitted for rubber matting	BS	JM



TITLE  
**Upper Rissington  
LEAP 02 - Amenity Play**

CLIENT  
**Bovis & Linden Homes**

SCALE	DATE	DRAWN
1:250 @ A3	JUN 2013	EM
DRAWING NUMBER	REVISION	
5109/ PS02	C	