

PLAY EQUIPMENT



Supplier: Timberplay
Product: Wobble Dish
Ref: 6.27300
Or similar approved



Supplier: Broxap
Product: Double Swing - Cradle
Ref: BX/PD 100012
Or similar approved



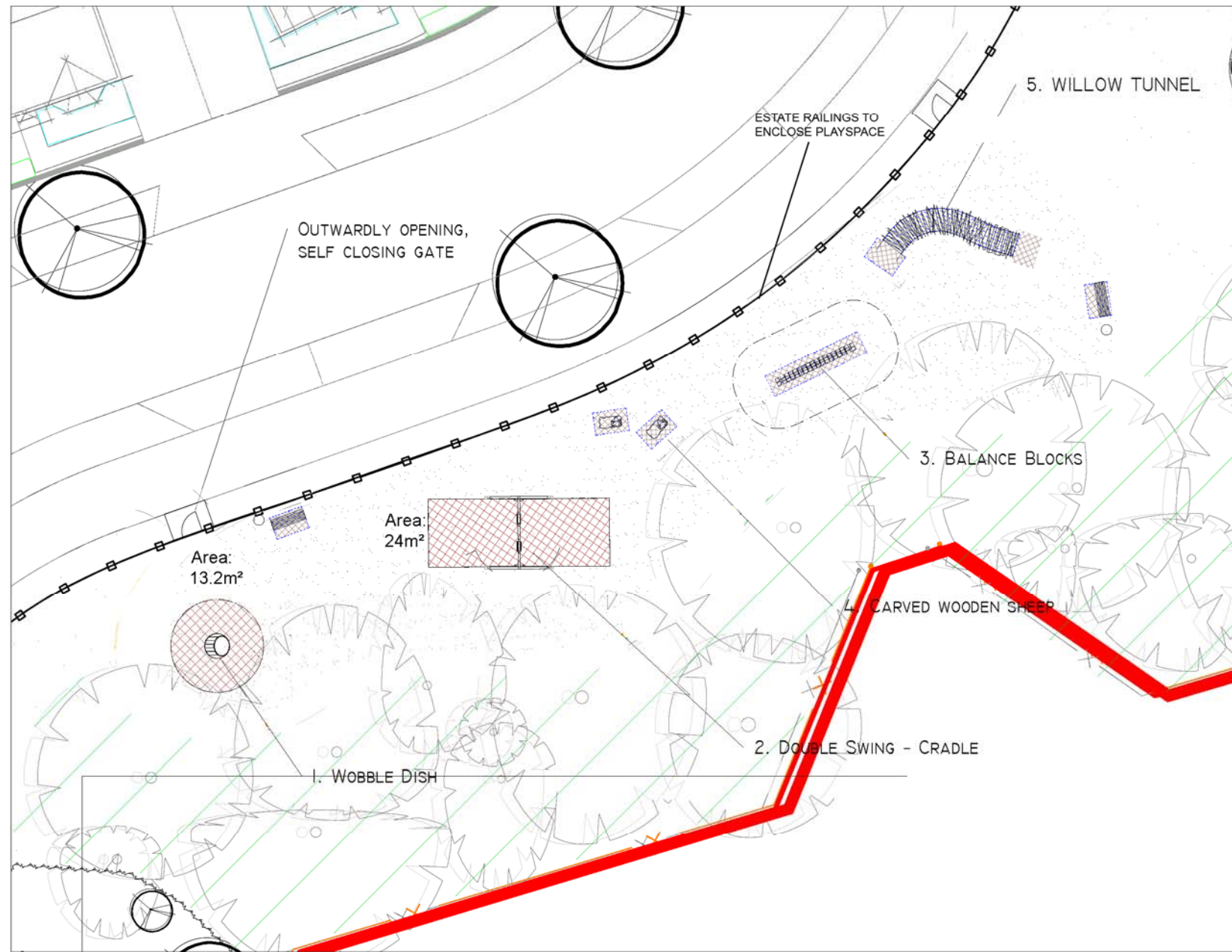
Supplier: Timberplay
Product: Balance Blocks
Ref: 6.517000
Or similar approved



Supplier: Broxap
Product: Wooden carved sheep
Ref: PX/PD 350001
Or similar approved



Supplier: Broxap
Product: Willow tunnel
Ref: BX/ HMP 550004
Length: 6m
Or similar approved



SURFACES

 Supplier: Terram
Product: Safety rubber matting 1x1.5m
Thickness: 22mm
Openings 250mm
Or similar approved


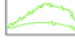




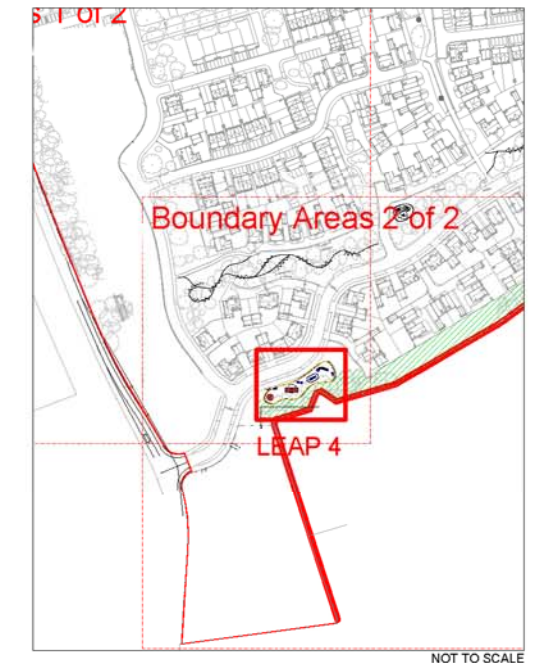
NOTES:
Based upon the Ordnance Survey map with permission of The Controller of Her Majesty's Stationery Office, © Crown Copyright.
Aspect Landscape Planning Ltd, West Court, Hardwick Business Park, Noral Way, Banbury OX16 2AF
Licence 100045345

Copyright reserved
No Dimensions to be scaled from this drawing.



KEY

-  Proposed Trees
-  Proposed Shrubs
-  Grass
-  Impact Area



C	17.12.18	Playbark omitted for rubber matting	BS	JM
A	2.5.18	Boundary fencing added	JM	JM
REV	DATE	NOTE	Drawn	Chk'd
REVISIONS				

aspect landscape planning

TITLE
Upper Rissington
LEAP 04 - Boundary Trees

CLIENT
Bovis & Linden Homes

SCALE	DATE	DRAWN
1:250 @ A3	JUN 2013	EM
DRAWING NUMBER	REVISION	
5109/ PS04	C	