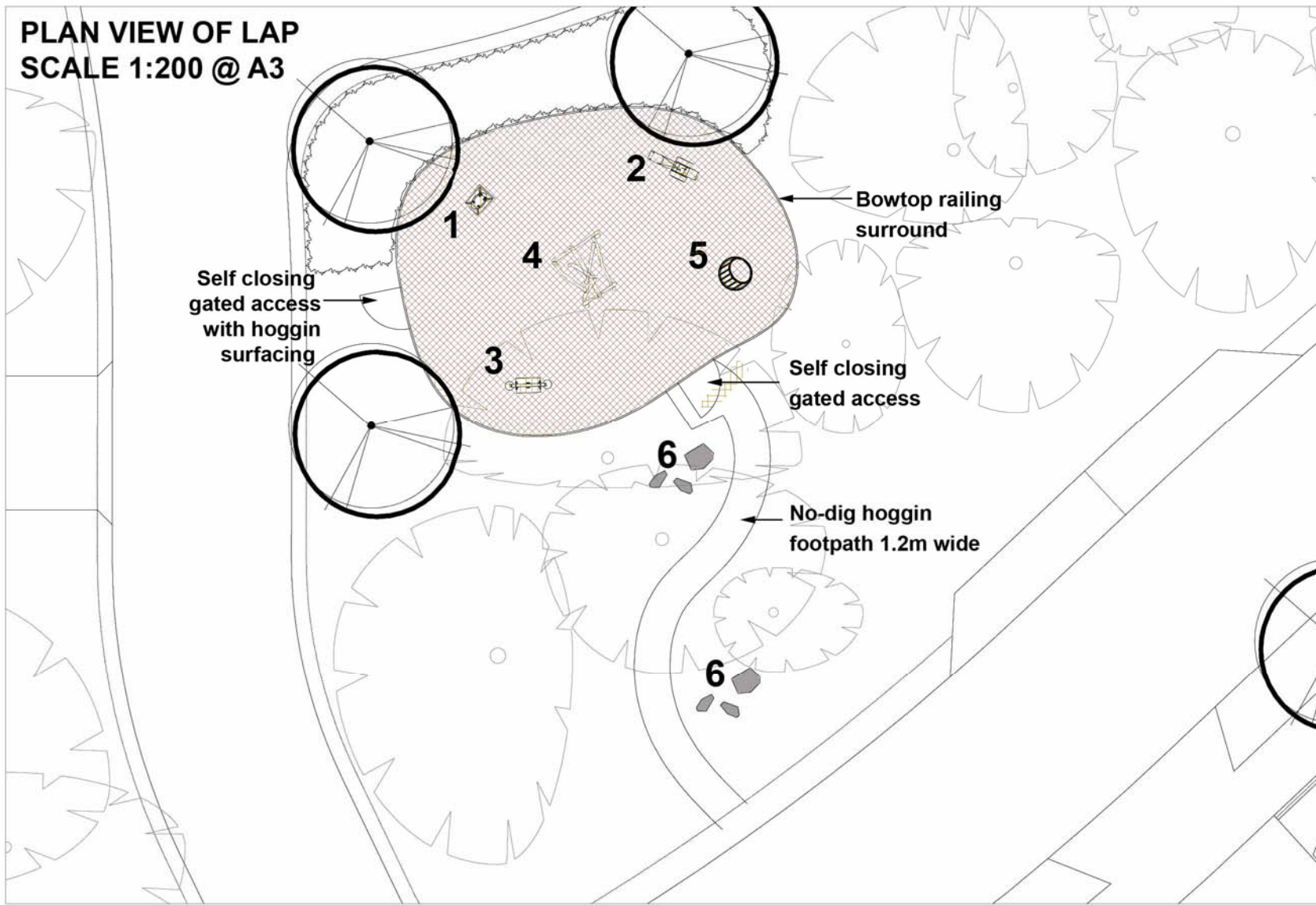


**PLAN VIEW OF LAP
SCALE 1:200 @ A3**



NOTES:
Based upon the Ordnance Survey map with permission of The Controller of Her Majesty's Stationary Office, © Crown Copyright.
Aspect Landscape Planning Ltd, West Court, Hardwick Business Park, Nonsal Way, Banbury OX16 2AF. Licence 100045345
Copyright reserved



KEY:

Supplier: Terram
Product: Safety rubber matting 1x1.5m
Thickness: 22mm
Openings 250mm



1
Product: Sheep
Supplier: Richter Spielgerate GMBH
Product Code: 4.24270



2
Product: Large Snail
Supplier: Richter Spielgerate GMBH
Product Code: 4.24230



3
Product: Small Sea Saw
Supplier: Timber Play
Product Code: 611700



4
Product: Climbing Path
Supplier: Russell Play
Product Code: H13_1



5
Product: Wobble Dish
Supplier: Richter Spielgerate GMBH
Product Code: 6.27300



6
Product: Boulders
Supplier: Russell Play
Product Code: TC1003



**Green Bow Top Fencing
to enclose play area 1.2m high**



Self closing Wicksteed Gate

C	17.12.18	Playpark omitted for rubber matting	BS	JM
REV	DATE	NOTE	Drawn	Chk'd
REVISIONS				

aspect landscape planning

TITLE		
Upper Rissington LAP		
CLIENT		
Bovis & Linden Homes		
SCALE	DATE	DRAWN
1:200 @ A3	AUG 2017	JM
DRAWING NUMBER	REVISION	
5109.PS. ASP07	C	