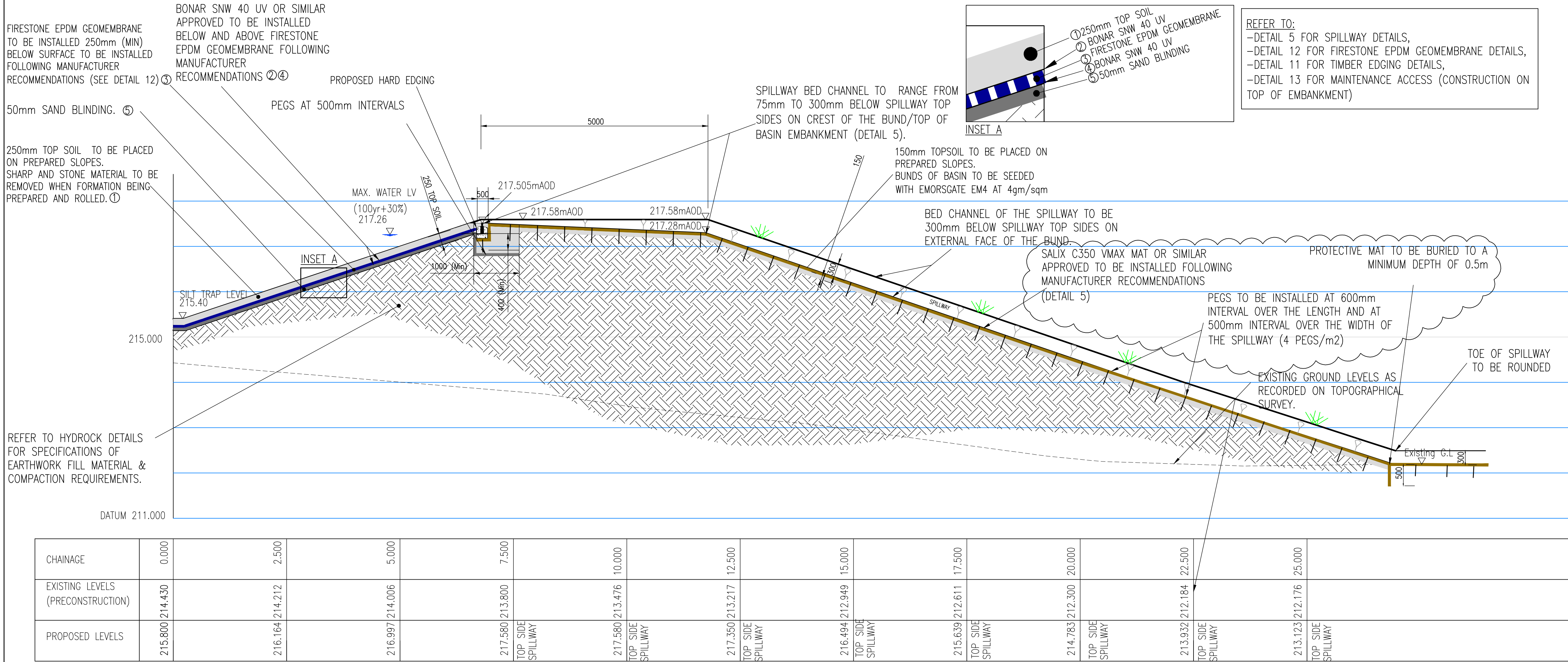


DETAIL 18: CROSS SECTION BUND D-D



DETAIL 19: BUND CROSS SECTION BUND C-C

NOTES

- ALL DIMENSIONS ARE IN MILLIMETRE UNLESS STATED OTHERWISE.
- THIS DRAWING SHOULD BE READ IN CONJUNCTION WITH ALL OTHER RELEVANT ARCHITECT & ENGINEERING DETAILS, DRAWINGS & SPECIFICATIONS.
- FOR POND LEVELS REFER TO DRG 0412/RP/200.
- FOR POND ARRANGEMENTS REFER TO WSP DRAWING 0412/GA/201.
- FOR POND SETTING OUT REFER TO WSP DRAWING 0412/SO/200
- FOR GENERAL DRAINAGE DETAILS, REFER TO DRG 0412/GA/201 & 0412/S104/114
- ALL WORKS IN ACCORDANCE WITH SPECIFICATIONS FOR HIGHWAY, OR AS OTHERWISE INSTRUCTED.
- DIMENSIONS GIVEN FOR TRASH & ANTI PERSONAL SCREENS ARE INDICATIVE AND FOR BUDGET PURPOSES ONLY. THE CONTRACTOR/MANUFACTURER IS RESPONSIBLE FOR THE DESIGN OF THE SCREENS AND FABRICATION DETAILS AND ENSURING SATISFACTORY FIT WITH RESPECTIVE HEADWALLS STRUCTURES.

B	06/12/18	JB	SALIX C350 VMAX DETAILS ADDED	JDP	JDP
A	12/10/2017	JB	FIRST ISSUE	JDP	JDP
REV	DATE	BY	DESCRIPTION	CHK	APP

DRAWING STATUS: S2 - FOR INFORMATION

Mountbatten House, Basing View, Basingstoke, RG21 4HJ, UK
T+44 (0) 1256 318 800, F+44 (0) 1256 318 700
wsp.com

CLIENT: LINDEN HOMES / BOVIS HOMES

ARCHITECT: IDP

SITE/PROJECT: UPPER RISSINGTON CONSORTIUM ONSITE WORKS

TITLE: POND DETAILS 18 & 19 SHEET 4 OF 4

SCALE @ A1: H 1:50 / V 1:50

CHECKED: JDP APPROVED: JDP

PROJECT NO: 50600412 DESIGNED: JB DRAWN: JB DATE: October 17

DRAWING NO: 0412-SD-203

© WSP UK Ltd

File path: S:\6680412 - UPPER RISSINGTON - CONSORTIUM DRAWINGS\DEVELOPMENT\AUTOCAD\STANDARD DETAILS\SD18\SD18.DWG, printed on 05 December 2018 16:48:27 by Basingstoke, John