

- NOTES**
1. ALL DIMENSIONS ARE IN METRES UNLESS STATED OTHERWISE.
 2. THIS DRAWING SHOULD BE READ IN CONJUNCTION WITH ALL ENGINEERING DETAILS, DRAWINGS & SPECIFICATIONS.
 3. FOR POND LEVELS & SECTIONS, PLEASE REFER TO DRAWINGS 0412/BP/200 & 201.
 4. FOR DETAILS (AS REFERRED TO IN KEYS BELOW AND ON PLAN) REFER TO WSP DWG 0412/SD/200, 201, 202 & 203.
 5. FOR SETTING OUT INFORMATION REFER TO WSP DWG 0412/SD/200.
 6. FOR GENERAL DRAINAGE DETAILS, REFER TO WSP DWG 0412/S104/114.
 7. BUND AND POND TO RECEIVE 150 TOPSOIL (250 TOPSOIL WHERE FIRESTONE EPDM GEOMEMBRANE IS TO BE INSTALLED) + SEED (MIX TO BE AGREED). TOPSOIL TO BE IMPORTED TO ENSURE EVEN COVERAGE AND ABSENCE OF STONES.
 8. ALL WORKS TO BE IN ACCORDANCE WITH 'HMSO SPECIFICATION FOR HIGHWAY WORKS' UNLESS STATED OTHERWISE.
 9. LANDSCAPING DETAILS BY OTHERS.
 10. CONTRACTOR TO SEEK CONFIRMATION WITH GAS COMPANY & ALBION WATER FOR PROTECTION MEASURES TO INTERMEDIATE PRESSURE GAS MAIN AND GREY WATER PRIOR TO ANY WORKS STARTING.
 11. GABION BASKETS TO BE 'GALFAN COATED' WITH BI-FACIAL WELDED 3mm MESH AND 75mmx75mm SQUARE MESH OPENING. STONES TO BE 100 TO 200mm CRUSHED INSOLUBLE STONES, SUCH AS COISWOLD STONES OR SIMILAR.
 12. FOR DETAILS OF EARTHWORKS SPECIFICATION AND STABILITY CALCULATIONS FOR POND EXCAVATION AND BUND CONSTRUCTION, REFER TO HYDROCK DETAILS.

- KEYS:**
- PROPOSED FIRESTONE EPDM MEMBRANE EXTENT. REFER TO DETAILS 6, 7, 12, 16, 17, 18 & 19.
 - PROPOSED ENKAMAT 0720 MATS PROTECTION EXTENT. REFER TO DETAILS 5 & 19.
 - EXISTING FENCE TO BE RETAINED
 - PROPOSED FENCE. REFER TO DETAIL 8.
 - PROPOSED ACCESS GATE. REFER TO DETAIL 9.
 - PROPOSED 3.5m MAINTENANCE ACCESS WITH TIMBER EDGING. REFER TO DETAILS 10 & 11
 - PROPOSED 3.5m MAINTENANCE ACCESS OVER EMBANKMENT. REFER TO DETAIL 13
 - EXISTING INTERMEDIATE GAS PRESSURE MAIN
 - FLAT TOP EDGING. REFER TO DETAIL 5.
 - EXISTING DITCH.
 - PROPOSED 150Ø GREY WATER SUPPLY PIPE & CHAMBERS.
 - ADOPTABLE SURFACE WATER SEWER & CHAMBER.
 - ADOPTABLE FOUL WATER SEWER & CHAMBER.
 - EXISTING GREY WATER MAIN.
 - KEY TO HEALTH AND SAFETY SYMBOLS
 - INDICATES A RESIDUAL RISK AS A WARNING.

REV	DATE	BY	DESCRIPTION	CHK	APP
H	06/12/18	JB	SPILLWAY DETAILS UPDATED	JBP	JBP
G	21/05/18	JB	GABION BASKET LAYOUT UPDATED		
F	12/10/17	JB	SECTION LOCATIONS UPDATED, NOTE 12 ADDED		
E	28/04/17	JB	DRAWING STATUS UPDATED, SPILLWAY NOTE ADDED		
D	04/01/17	JB	NOTE 11 ADDED, NOTE FOR GABION UPDATED		
C	13/12/16	JB	DRAWING STATUS UPDATED		
B	01/12/2016	JB	SPILLWAY UPDATED, NOTES UPDATED		

REFER TO DRAWING 0412-D-109, 0412-GA-202 FOR SPILLWAY ARRANGEMENTS AND FOUL PIPE DIVERSION DETAILS.

WSP | PARSONS BRINCKERHOFF

Mountbatten House, Basing View, Basingstoke, Hampshire RG21 4JH
 Tel: +44 (0)1256 318800 Fax: +44 (0)1256 318700
 www.wspgroup.com www.pbworld.com

CLIENT: BOVIS HOMES / LINDEN HOMES

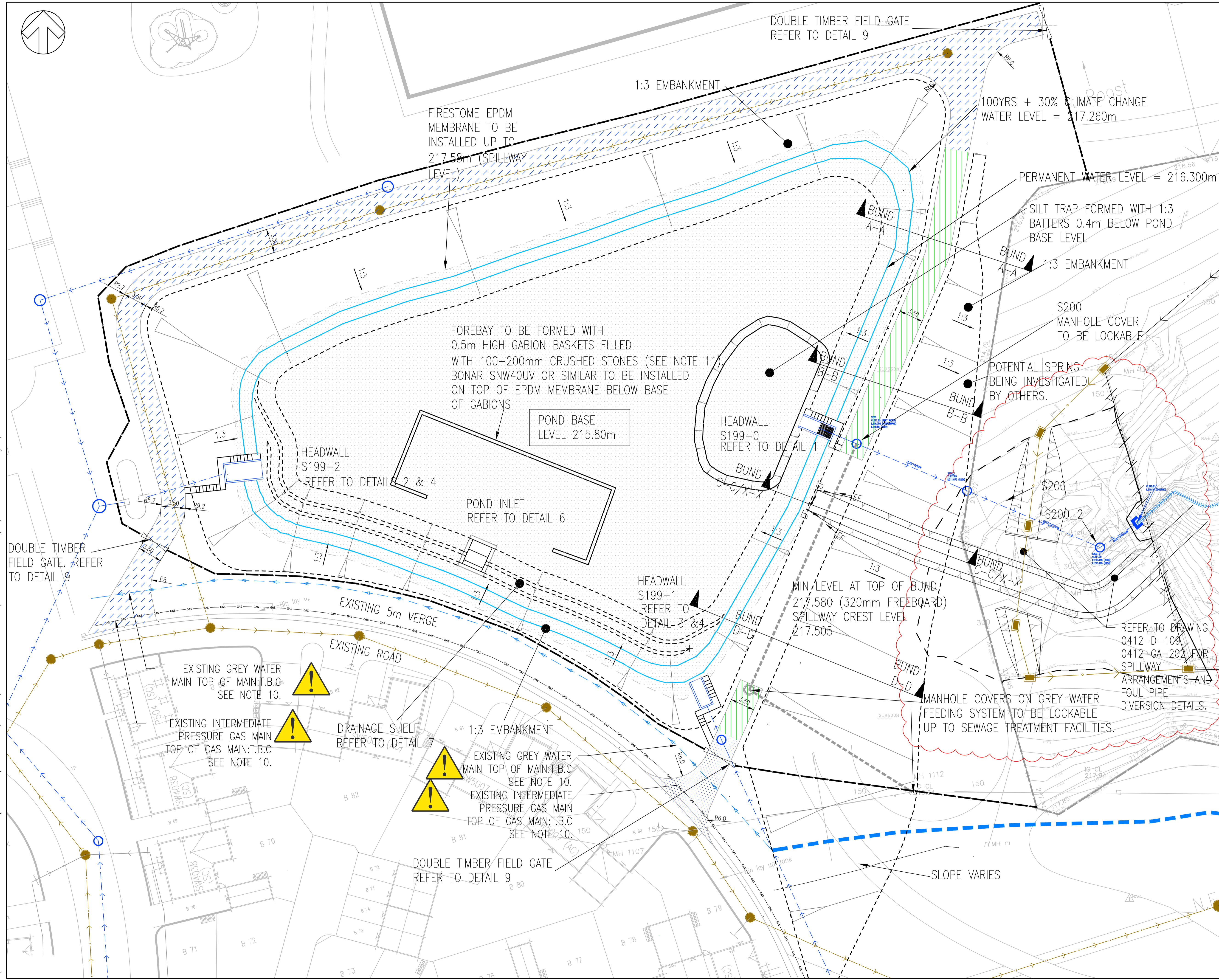
ARCHITECT: IDP

PROJECT: UPPER RISSINGTON

TITLE: PROPOSED POND GENERAL ARRANGEMENT

SCALE B A1: 1:250	CHECKED: JB	APPROVED: JDP
CAD FILE: 0412-GA-201	DESIGN DRAWN: MILE	DATE: September 2016
PROJECT No: 50600412	DRAWING No: 0412-GA-201	REV: H

© WSP Group Ltd



S:\50600412 - UPPER RISSINGTON - CONSORTIUM E DRAWINGS DEVELOPMENT\AUTOCAD\GA GENERAL ARRANGEMENT\0412-GA-201.DWG 06/12/2018 09:40:15 Blovignac, Julien