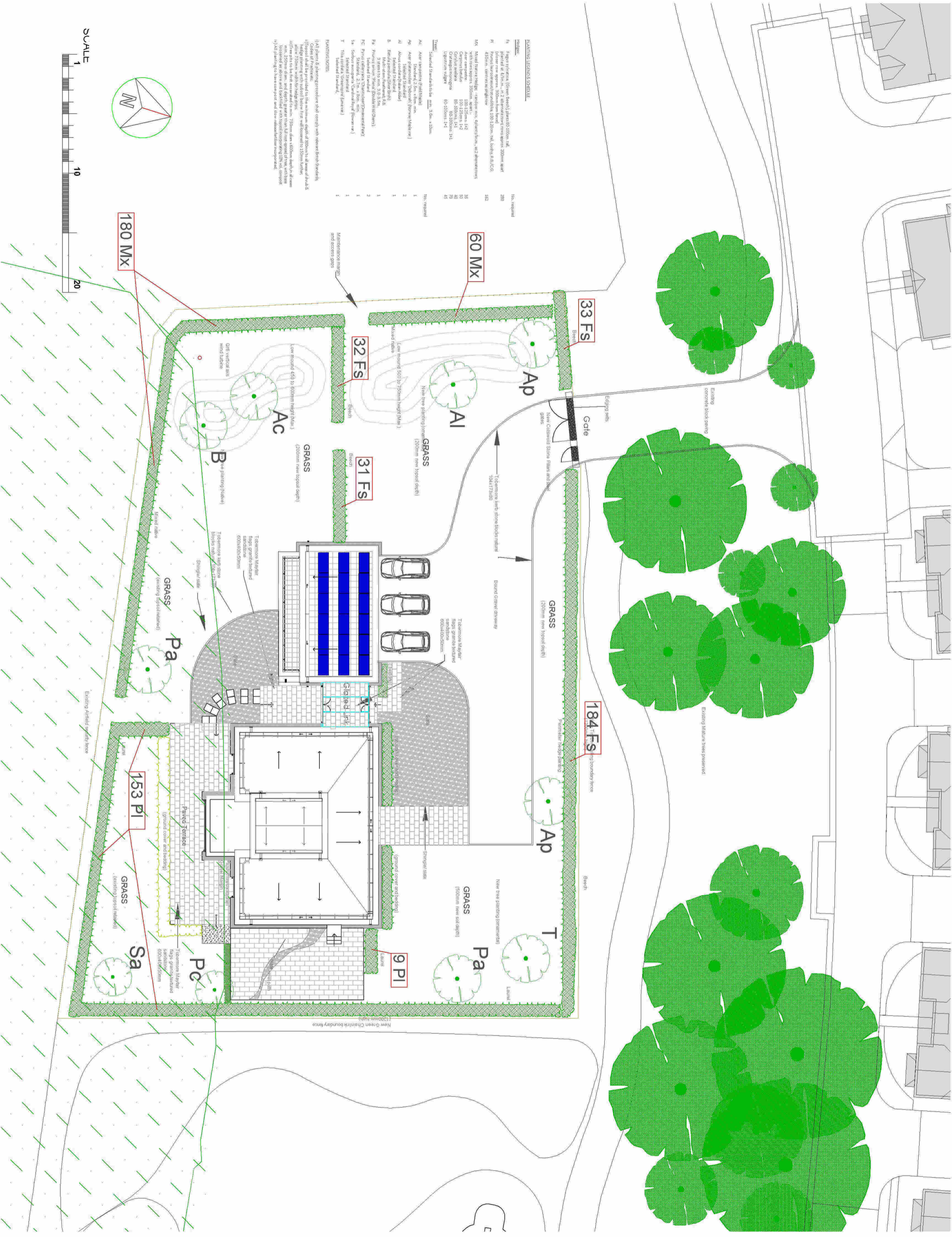


This drawing is the copyright of NMW Architects Ltd and shall not be reproduced without the written consent of NMW Architects Ltd. This drawing is for the use of the client and is not to be used in any other project. All other drawings and documents produced in connection with this project shall be the property of NMW Architects Ltd and shall not be used in any other project without the written consent of NMW Architects Ltd.

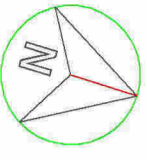


**PLANTING LEGEND SPECIFICS**

Code	Planting Details	No. required
Fs	Figure 8 (Green Beech) 2m x 2m x 2m, planted at 400mm x 400mm grid	200
Pl	Planting in front of building, 450mm x 450mm, planted at 400mm x 400mm grid	452
Mt	Mature trees (various sizes) to be planted at 4m x 4m grid	35
Ac	Acacia (various sizes) to be planted at 4m x 4m grid	35
Ap	Apple (various sizes) to be planted at 4m x 4m grid	2
Al	Almond (various sizes) to be planted at 4m x 4m grid	1
B	Beech (various sizes) to be planted at 4m x 4m grid	1
Pa	Planting in front of building, 450mm x 450mm, planted at 400mm x 400mm grid	452
Pl	Planting in front of building, 450mm x 450mm, planted at 400mm x 400mm grid	452
T	Tilia cordata (various sizes) to be planted at 4m x 4m grid	1

**PLANTING NOTES**

- 1) All plants & planting procedure shall comply with relevant British Standards.
- 2) Codes of Practice: Codes of Practice shall be applied to the minimum depth of 250mm, all ground levels shall be finished to the correct level.
- 3) All planting to be done in accordance with the relevant British Standards.
- 4) All planting to be done in accordance with the relevant British Standards.



**REVISIONS**  
 A. 01-08-2018 GA  
 Photovoltaic solar panels added, glazed link updated, flush threshold drain updated, glazed link front entrance updated  
 B. 22-08-2018 GA  
 Site plan updated to landscape architect's drawings. Therma Airo 9 Air source heat pump shown, GR6 vertical axis wind turbine added on South West corner of the site.

**THE WATHTOWER**  
 LITTLE RISSINGTON  
 TRIMAC PROPERTIES LTD.  
 NMW Architects

1097-12  
 1:200 @ A2  
 1097-12  
 1097-12