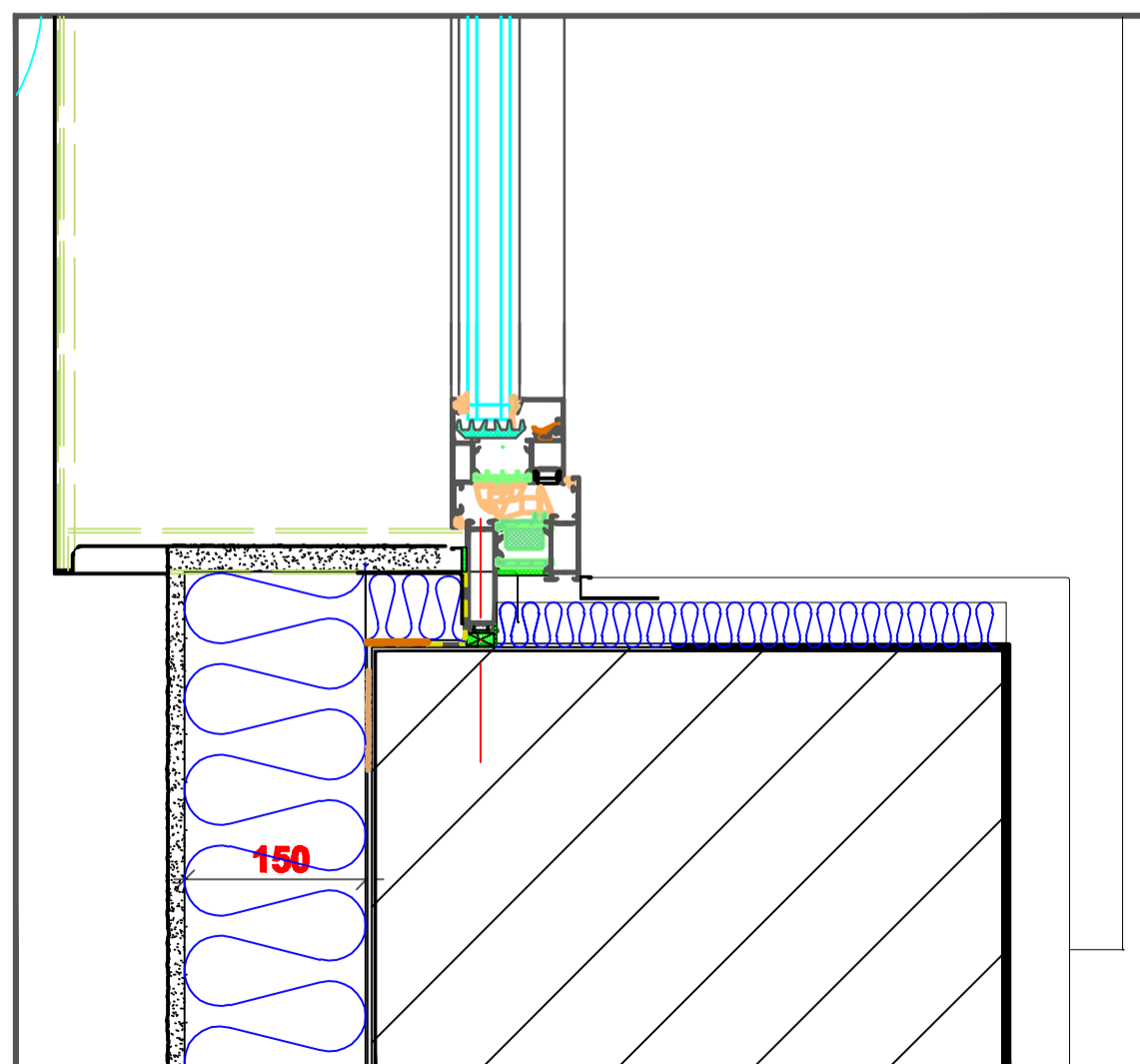


TYPICAL WINDOW SECTION 1:5



TYPICAL JAMB DETAIL 1:5

REVISIONS	



Tel: 01753 670100
 200, The Water Tower, Little Ribington, Little Ribington, Wiltshire, SN10 3JG
 Email: info@nmwarchitects.co.uk
 Website: www.nmwarchitects.co.uk

CLIENT
TRIMAC PROPERTIES LTD.

PROJECT
**THE WATCHTOWER
 LITTLE RIBINGTON**

DRAWING TITLE
TYPICAL WINDOW DETAILS

NO.	DATE	BY	CHECKED	STATUS
1	10/07/2016			

SCALE
1:5 @ A2

DRAWING NUMBER
1097-301