

**PUB LAND, UPPER RISSINGTON**

**Accommodation Schedule**

08.10.2021

Site layout Plan P1

Net Developable Area: 0.185 Hectares acres / 0.46 Acres net (approx) TBC

Coverage (Sqft/net developable acre) 16326(approx)

Vistry Group



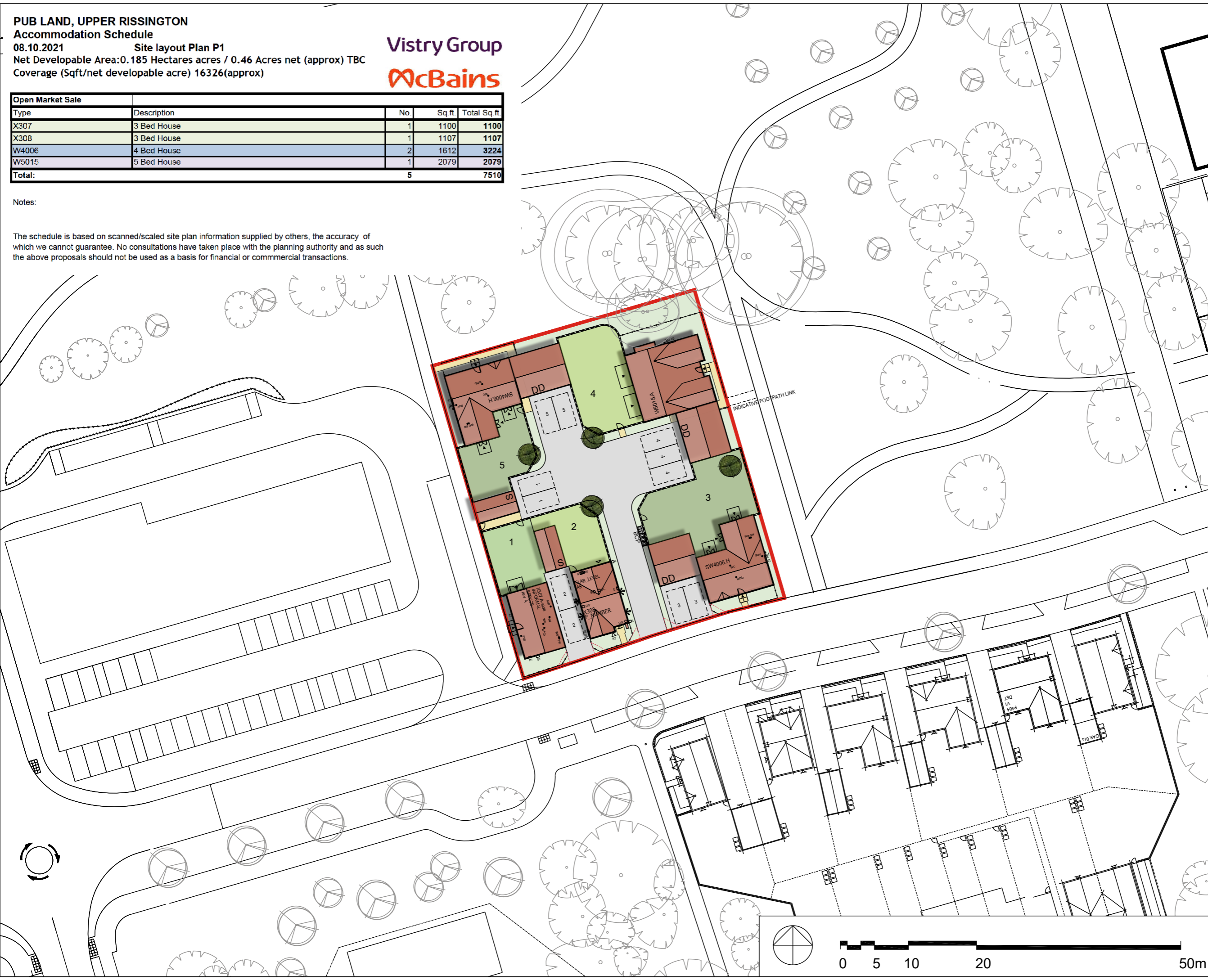
Open Market Sale				
Type	Description	No.	Sq.ft.	Total Sq.ft.
X307	3 Bed House	1	1100	1100
X308	3 Bed House	1	1107	1107
W4006	4 Bed House	2	1612	3224
W5015	5 Bed House	1	2079	2079
<b>Total:</b>		<b>5</b>		<b>7510</b>

Notes:

The schedule is based on scanned/scaled site plan information supplied by others, the accuracy of which we cannot guarantee. No consultations have taken place with the planning authority and as such the above proposals should not be used as a basis for financial or commercial transactions.

Notes:  
The contractor must verify all dimensions on site before commencing any work on shop drawings, do not scale from this drawing  
McBains Ltd copyright

BIM Transmittal Disclaimer  
McBains Ltd makes no express or implied warranties with respect to the character, function, or capabilities of the data (inclusive of 3rd party data incorporated within), or the suitability of the data for any particular purpose beyond those originally intended by McBains Ltd. Please refer to our standard terms and conditions for further details.



P1 Issued for planning			08.10.2021
Revision	Amendment	Date	
PV	SC	POR	
Drawn by		Reviewed by	Approved by
61825	SEP '21		1:500 @ A3
MCB Number	Date created		Scale



McBains Ltd  
5th Fl. 26 Finsbury Square London EC2A 1DS  
+44 (0)20 7786 7900  
mcbains.co.uk

Client  
**Vistry Group**

Project  
LAND AT PUB LAND  
UPPER RISSINGTON

Drawing Title  
SITE LAYOUT PLAN

**ARCHITECTURE**

Drawing / Document Reference		Status
VIST01 - MCB - ZZ - ZZ - DR - A - 0230		D5 - P1
Project Idn	Originator	Zone
	Level	Type
	Discipline	Number
	Suitability	Revision

